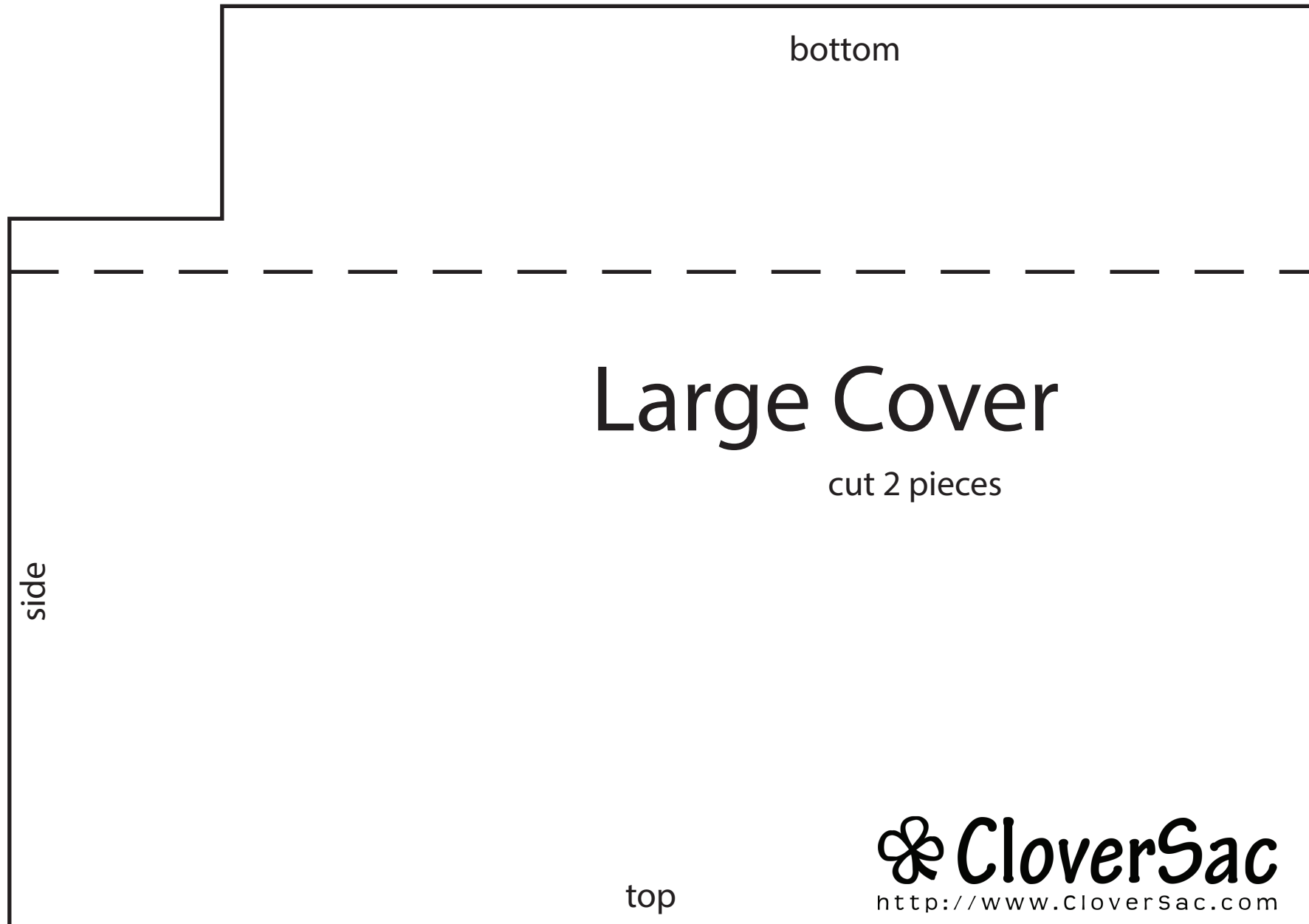
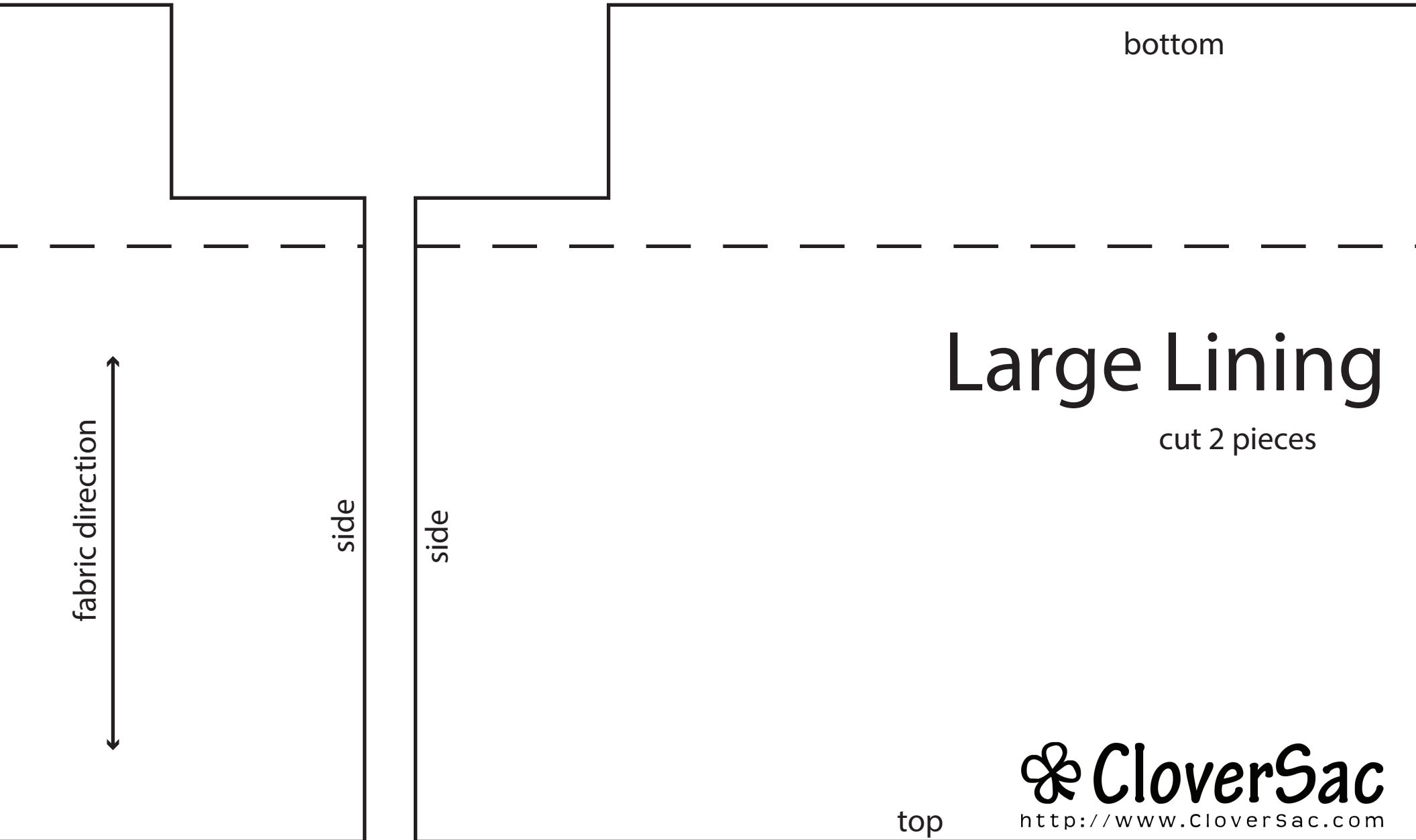


1a



1b



bottom

Large Lining

cut 2 pieces

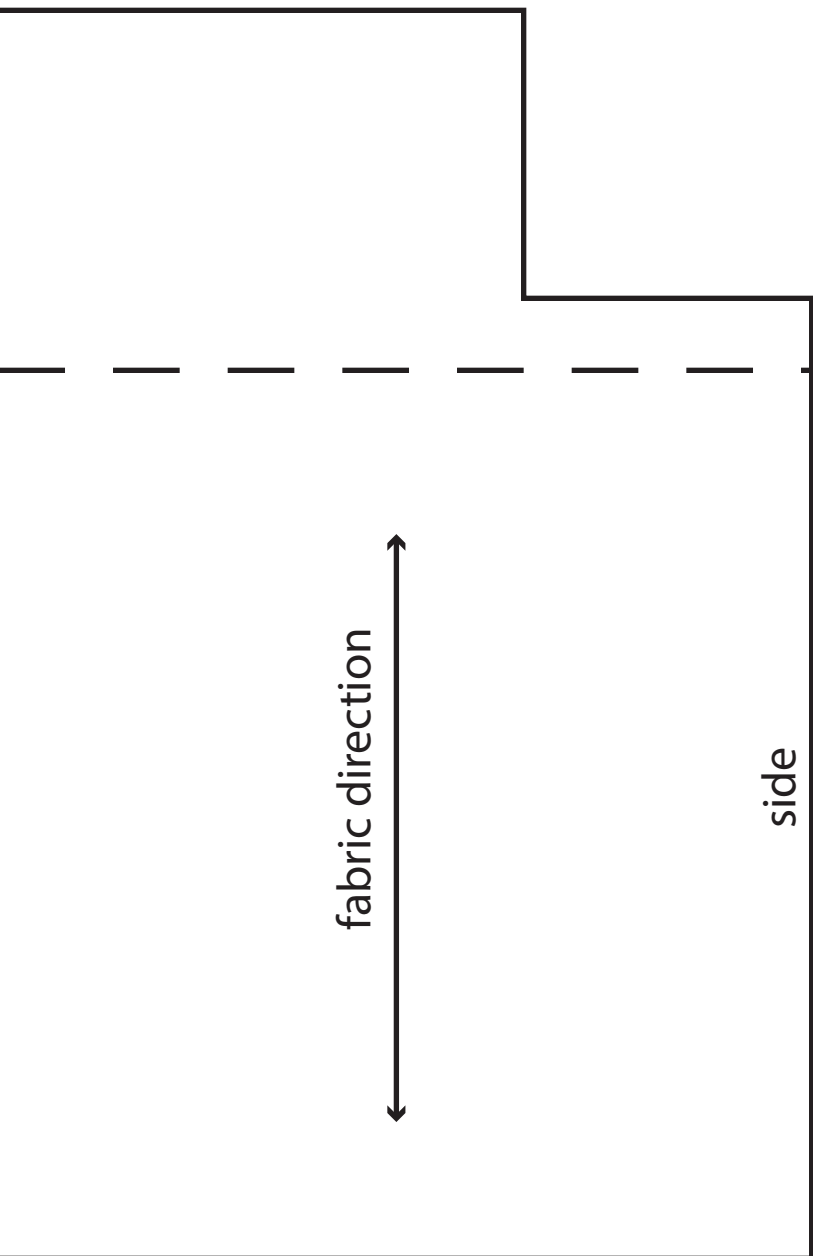
side

side

top

 **CloverSac**
<http://www.CloverSac.com>

1c



 **CloverSac**
<http://www.CloverSac.com>

2a

side

bottom

Large Inner Pocket #1

cut 1 piece

top fold line

bottom

 **CloverSac**
<http://www.CloverSac.com>

2b

side

Large Inner Pocket #2

bottom

cut 1 piece

top fold line

side

bottom

 **CloverSac**
<http://www.CloverSac.com>

2c

side

side

bottom

top fold line

 **CloverSac**
<http://www.CloverSac.com>

2d

Large Outer Pocket

cut 1 piece

side

bottom

 **CloverSac**
<http://www.CloverSac.com>